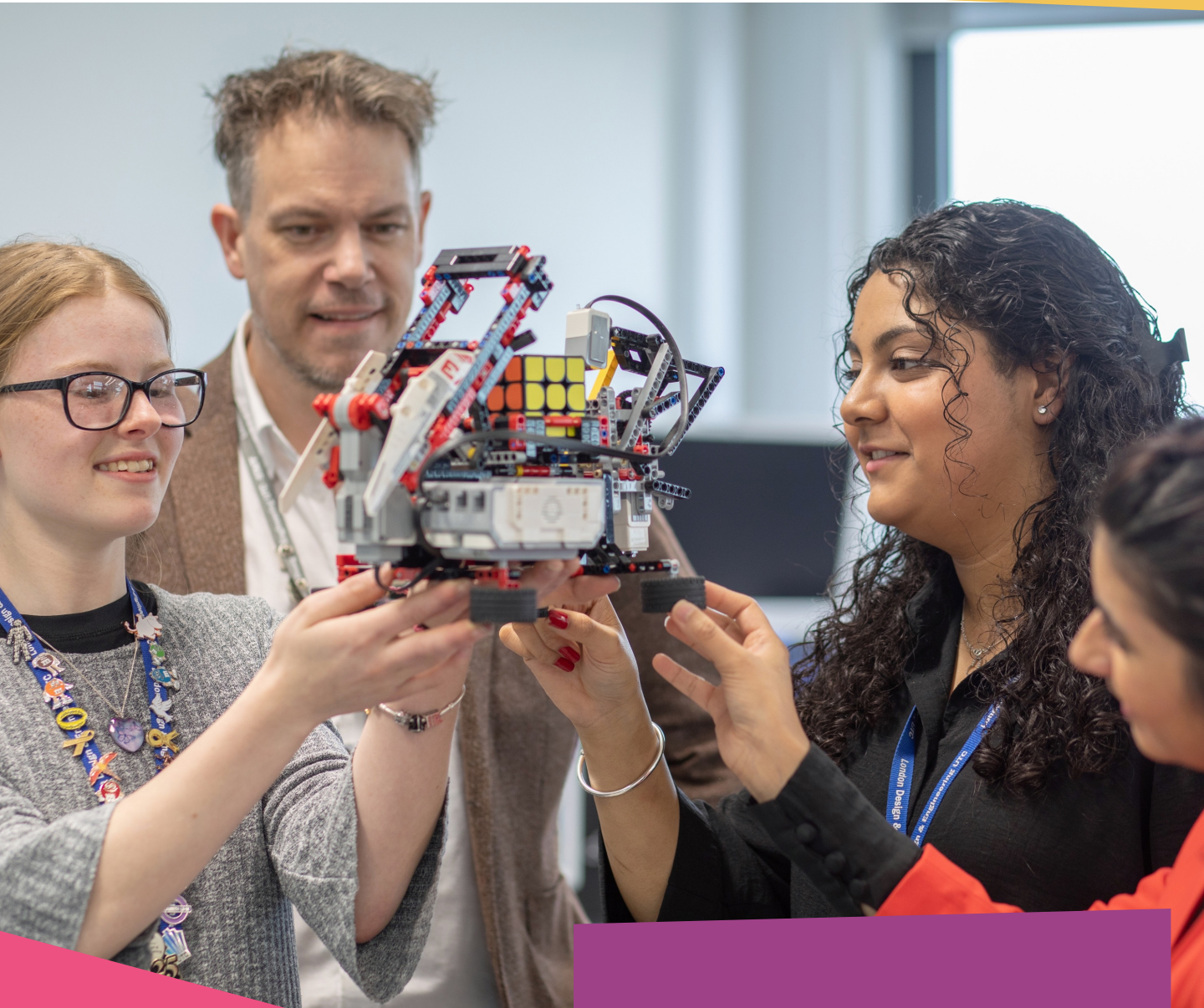


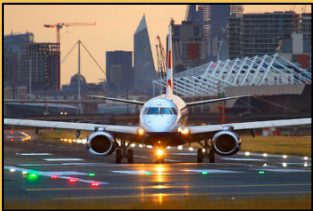
Learner Newsletter



Winter Edition

- Employer Engagement
- Current Affairs
- Learner Limelight
- Lifestyle
- Competitions (and prizes!)

Welcome



Welcome to the first edition of our learner newsletter! We are excited to share amazing stories from across the college, shining light on exciting employer led projects and amazing learner achievements. There are also stories by our learners that explore lifestyle, culture, offer revision tips and even explore current affairs.



It has been 36 years since our local airport, London City airport (LCY), has opened its doors allowing people to fly domestically as well as connecting London to unique parts of Europe. Located in the heart of East London, a modern approach to air travel has quietly but steadily been growing from a small airstrip into a major international airport. Situated beneath the skyline of Canary Wharf, LCY has a remarkable journey of growth and expansion, just like the surrounding city it serves.



The first executive decision of the construction of an airport was introduced by LDDC (Reg Ward) and followed through by an engineering company. In 1982, LDDC released a survey to residents, showing most of the neighbourhood supporting the idea of a domestic airport. However, a minority of people voted against the idea due to environmental threats concerning the local wildlife in the region. Nevertheless, in 1983, the LDDC applied for building permissions for the airport, although was rejected by the Newham council due to believes that the airport was not compatible with the residential development.

This was eventually appealed by the LDDC, in which they won the appeal in May of 1985. Planning permission of the airport was allowed in February 1986, with construction beginning three months later. In July 1986, Prince Charles (now King Charles III) placed the foundation stone for the terminal building. On the 3rd of May 1987, the first aircraft to land at the airport was a DHC Dash 7 that was operated by Bryman airways, who also conducted the first commercial flight from the airport on October 26th, 1987, by Queen Elizabeth II.

In the modern day, London City Airport has experienced a transformation with one of the most recent developments being the construction of the parallel taxiway to the singular runway and adding 8 more stands for aircrafts, indicating the growing demands for flights from this key site. In addition to handling more flights, this expansion makes it possible for the airport to handle larger planes, which will allow London to connect to even more regional locations.



London City Airport's story of development and evolution from a small aerodrome to an international hub is fascinating and inspiring for the possibilities for future air travel. City Airport is growing to new heights, showing not only the capabilities of future air transport but also the evolving East end of London it proudly serves.



Our year 12 Digital Media learners took part in an Employer Led Project where they were tasked to digitise Advent this year, thanks to the wonderful initiative by Mother Polly and Edward from the LDE Chaplaincy Team. Our learners brought the spirit of the season to life while aligning with key learning outcomes of their coursework in 3D Animation, Animation, and Portfolio development.



Edward and Mother Polly, the heartbeat of our Chaplaincy, are dedicated to offering support and a safe space for both our learners and staff. The Chaplaincy room stands as a pillar of our college community, catering to diverse pastoral needs, encompassing matters of mental health, and respecting various religious and non-religious perspectives. It serves as an inclusive haven.



For this ELP, our Digital Media learners crafted a series of digital animations, one for each day of Advent. These digital gems served as backgrounds for the special messages organised by the Chaplaincy Team. The brief for this creative venture entails using software of the learners' choice to create either a 2D static or 3D animation that features the opening of a Christmas-themed door.

Learners compiled 25 distinct animations into special countdown videos, which were displayed on our digital notice boards throughout the Advent season. While Christmas-themed animations are encouraged, learners have the artistic freedom to explore any wintry theme they desire.

This project exemplified how the curriculum can come to life, aligning with key learning objectives from Unit 11 in 3D Animation, Unit 10 in Animation, and Unit 23 in Portfolio development, as well as supporting the college community.

“Learners will be completing evidence for different units of work within the Cambridge Technical Digital Media course pathways, this includes responding to a client brief, planning and creating digital animations and pitching their final pieces to our multi faith partners, this is a perfect way to recognise Advent which is a multi faith event! We are so lucky to work with our own chaplaincy team on this exciting project, thank you to Polly and Edward!” James, Chief Technology Officer and teacher of Digital Media.



An inspiring journey

Nina

Have you always struggled with inspiration? Have you ever wondered how you could release more creativity into your work? Creativity can vary for every person, finding something that's inspiring can truly help you to unlock that part of your brain and produce new ideas.

There are many things to do around London that can spark inspiration:

Perhaps you may want to do something purer and simpler such as visiting a local park and connecting with nature. Personally, I find spending time around greenery to be very relaxing which allows inspiration to flow through, it's a mind opening experience and a great way to release yourself from negativity which is often the cause of creative block. A local park: central park



There are many interesting artworks to view that explore the stories of East London, if you want to explore something a little more local you can visit the Nunery gallery, it includes artworks that explore the stories of east London and celebrates today's artistic talent



A good example would be to visit the London Dungeon, taking a trip here can spark ideas for historical artworks, pieces or even music. This option would be best if you are in the position to spend a little money.



You can even find inspiration at home: Exploring different art forms can bring inspiration too, discovering new genres of music and listening to something different can truly help with enhancing your creativity and expanding your imagination.



Enterprise Open Evening

Learner Limelight – Lorena

LDE came alive with creativity and hard work on 21st November as enterprise learners showcased their innovative stands and plans at the Open Evening.

The Enterprise fair was not only a platform to showcase learners' talent, but also played a role for fostering creativity in the school. It emphasised the importance of thinking 'outside of the box', taking risks and perusing passion – all skills of an entrepreneur.



A Glimpse into the Learner's work



Learners were given a £25 budget and a brief with specifications about the invoice, marketing, finance and design of the stalls.

The event featured a range of ideas, reflecting the college's inspiring nature. From beverages to gadgets, the enterprise students demonstrated resilience and passion. For the previous 4 weeks, learners had worked on the project and showcased a sense of community with one other and the college by helping with the stands and exercising their entrepreneurial skills.

Teacher's insight

Following the exciting day of selling to accompany the Open Day, our teachers reflected on the success of the event.

Teacher of Business and Enterprise, Sharian, shared that, 'this opportunity equipped learners practical skills instead of theoretical' which is what modern-day teaching is primarily based on to give young people a head start in life.

Priscilla, another Enterprise teacher, also found that it was "different from any other open evening" and she was overall "happy with the enterprise class for how it got involved and participated."



Our year 13 psychology learners completed an exciting Employer-Led Project exploring public perception of police in the UK - delving into the curriculum topic of authority and aggression.

Guided by Dr. Jolanta, a Senior Social Researcher at the Home Office, our learners will gain valuable insights into this topic from a real-world context.



As a Senior Social Researcher, Jolanta manages government projects and collaborates with multidisciplinary teams both within and outside the Home Office. Her role involves providing policy reports and evidence-based recommendations which puts into practise the topics studied on the AQA A level psychology course.

The session kicked off with an engaging overview of Jolanta's job role and the significance of research in her daily responsibilities. Learners then delved into thought-provoking questions about their perceptions of the police and policing in the UK, sparking lively debates on these crucial matters, especially relevant to young people living in London.

Jolanta launched the project with the research question 'How can we improve public perception of the police in the UK?' Learners worked for 6-8 weeks to complete this project, and Dr. Jolanta discussed various intriguing ways for them to present their findings, including creating documentaries, delivering presentations, and conducting interviews.

Dr. Jolanta encouraged the learners to consider specific angles as they explore this topic further: the role of authority and its implementation, the impact of policing in the community versus online, issues of police diversity, the presence of the police in the community, strategies for tackling crime, and measures for protecting the public.

Psychology learner Manahil shared *'This ELP is an exceptional opportunity that was given to us by The Home Office that will help us understand human behaviour on an even deeper level.'*

Thanks to Dr. Jolanta Gola for providing this exceptional opportunity to our learners and for continued support of psychology at LDE UTC having worked with our learners several times.

Through this project, learners presented amazing findings with a variety of creative presentation styles such as... Dr. Jolanta shared that she was blown away by the learners' work and offered them feedback and praise on their

Citizens Win Award

Learner Limelight – Mahin

A group of our learners were invited to visit the excel centre for the 25th Anniversary of Community Organising in East London and attend a masterclass on Politics and Democracy and “Building People Power for a Generation!” The masterclass had many local institutes from Newham and few universities and it had many great performances from bright and positive pupils from different schools, where we celebrated many of the civil rights movements from all of the schools.



At the Politics and Universities masterclass LDE won the activism award for securing paid internships for six formers at Lendlease! This opportunity provided the learned to take part in summer placements at leading companies: Robert Bird Group, Gort Scott, Churchman Thornhill Finch and Equals Consulting whilst receiving the living wage. This opportunity was only possible through the learners' determinations and courage to put forward injustices.

In line with wider socioeconomic aspirations at Silvertown to promote STEM careers and encouraging ‘good work’ opportunities paid at a Living wage, Lendlease worked with LDE to organise paid placements for five year 12 learners. Learners were set a research/design challenge to work on and present back at the end of the week.

Reflecting on our learners’ amazing achievement, community engagement leader Edward shared, *“I’m always inspired and encouraged by your commitment for social justice and addressing issues you all feel strongly about, but your willingness to just better yourselves. I pray this achievement gives you all the confidence and motivation to continue bringing about the change you want to see in society and the communities you live in.”*

The TELCO anniversary event was a massive hit, from Choirs to Nasheed, drums to traditional instruments, we celebrated the Building People Power for a Generation. There was a song that stood out sung by many positive pupils where they celebrated the living wage:

We celebrate, getting paid
London living wage
We shake the hands, that paved the way
For a fair fay work, for a fair day pay

Who are Citizens UK? Let’s say you have an idea which is able to bring a change to society, you need to find a group of people who represent your idea like you or is able to bring it up to recognition, Citizens UK is the organisation which can assist you make the change and bring justice to the community. Citizens UK is an organisation which brings people and local organisations together, and is known as the “UK’s biggest, most diverse, and most effective people powered alliance.”

The Citizens UK members at LDE have discussed and affected change in Health Inequalities, Living Wage, Housing, Youth Safety. If you would like to make a change or take part in making a change, get in touch with the chaplaincy.

Revision: How to get started

Lifestyle - Srija

I've always struggled to get started with revision, but I found out that once you get into the flow of studying you will not want to stop. TRUST ME.

Here's five tips on how to overcome that hurdle and get started:

Get Motivation

You can do this by making mood boards on Pinterest. Making a Pinterest board transforms your aspirations into a visual collection which can motivate you every time you look at it. You can make your notes pretty to help you stay focused because come on, who doesn't love pretty notes?

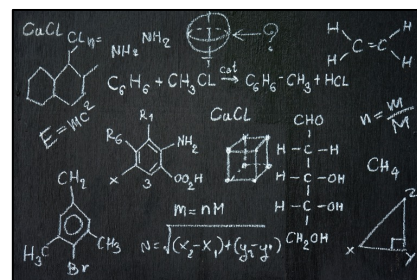


Have a few minutes to yourself before you start studying

Creating space between your other hobbies and study time is a MUST for a productive revision session as it further motivates you and gets you in the flow of studying. I usually do this 10 minutes before I start studying but you can increase or decrease the amount of time according to your preference. During this time, I strongly advice you not to go on your phone or any social media. In this time, you can plan what you're going to be studying or go for a walk or anything that will get you in the flow of studying.

Remove THE distraction

Coming from someone who is super addicted to her phone, having my phone away really helps A LOT. I usually give my phone to my parents at home. You can give to trusted person, leave in drawer, and put on airplane, do not disturb mode, or turn off notifications.



Get organised

You can do this by sticking in all your loose sheets, cleaning your room (or at least your study space) as a clean and clutter-free workspace is important for getting started with work. Get 2 folders for each subject (1 for notes, 1 for Exam Questions), or if you want to go digital you can use OneNote or Notion for organising your lessons and making notes.

Lastly, remember you are in control of your future and unfortunately the choices you make now, positive, or negative, will have a significant impact on your future and that's just how it is. Good luck... Now go and get started!



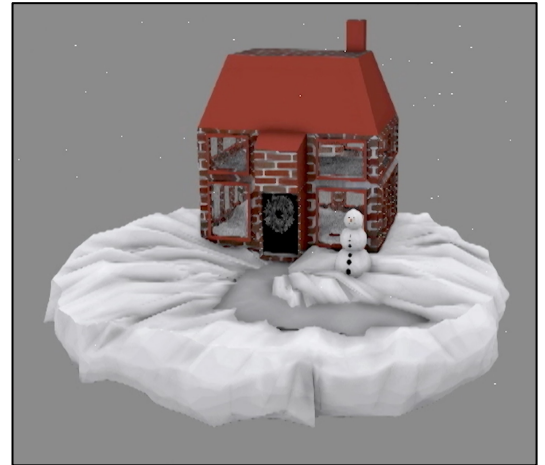
Christmas at LDE!

LDE – Tayva and Andrea

Here at LDE, we celebrated the festive season in several ways!

Our digital learners created an online advent Calendar with a new message played alongside a digital animation each day to inspire and encourage learners through their December journey at LDE.

We also had visiting musicians and LDE learners running a scratch choir. The festively formed choir hosted a public choir practice, sharing beautiful carols during lunch time in the last week of term.



Why do we celebrate Christmas?

In an interview with Mother Polly, she shared "I think it is really good to mark celebrations because otherwise it feels like we're just constantly working, and it is important to celebrate events. And I think for me personally, Christmas is a time when we celebrate the birth of Christ. But I don't believe that you must be Christian to celebrate Christmas. I think it is an opportunity where we can gather and have something to celebrate and have something joyful to take us out of pressure of exams and study."



Ready for Christmas

Whether they are hanging up baubles for the Christmas tree, singing out a classic carol or designing a masterpiece Christmas card, learners throughout the college have had the opportunity to get into the festive spirit.

One learner shared, *"It has been fun to take part in all the festive activities throughout December and see the advent calendar counting us closer to the 25th December!"*



Our year 12 and 13 engineering learners enjoyed an enriching masterclass led by Alice, Spyros, and Konstantinos from Pop2See, delving into the groundbreaking AI solutions they are developing to empower the blind community.

Pop2See is a transformative social venture, committed to crafting technology solutions that enhance the daily lives of blind or visually impaired individuals. Their focus on impact-driven technology and AI aligns with their mission to provide inclusive solutions promoting autonomy and independence within the blind community.

Co-founders Alice and Konstantinos, both 19 and 18 years old, respectively, serve as genuine inspirations to our learners, showcasing the incredible possibilities within the realms of engineering and technology for young people.

Our learners were then treated to a demonstration of two distinct technologies created by Pop2See. In one instance, a learner wrote a word on a piece of paper, which was then processed by a camera and converted into braille for a blind person to understand.

The visitors highlighted numerous situations where this technology could support blind individuals, such as reading the classroom board or deciphering crucial information on a medical prescription.

Anthony, year 11 engineering learner shared *"The ideas to help blind people being able to function in life was really cool. It was inspiring to see young people doing such amazing things!"*

We extend our heartfelt thanks to our visitors for delivering an inspirational talk, showcasing to our young learners how AI, engineering, and innovation can collaboratively drive positive change. We eagerly anticipate witnessing the continued success of Pop2See and feel privileged to now be part of their remarkable journey through this remarkable talk.

Thanks to Dr. Warren from University of East London for facilitating this memorable experience.



Mastering Strategic Thinking: A learners guide to game theory

Maths - Ibrahim

Game theory may sound like a term that only mathematicians or economists use, but it's actually a really cool concept that can help us understand how people make decisions.

What is Game theory?

Imagine you're playing a game of chess. You're constantly thinking about your next move, but your decision depends on what your opponent does. This is the essence of game theory - it's all about figuring out what the best move is, considering what others might do.

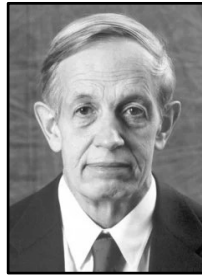
"In the game of economics and business, understanding game theory can give you a competitive edge." -Barry Nalebuff.

Key strategies:

Within the field of game theory, "games" are discussed, but not in the sense of board or console games. In this context, a "game" is any scenario in which there are "players," such as you and your chess opponent, and each of them has distinct "strategies" and "payoffs"

Nash Equilibrium:

This is a fancy term named after a smart guy called John Nash. In simple terms, a Nash Equilibrium is a situation where no player can benefit from changing their strategy, assuming the other players don't change theirs. It's like reaching a point in your chess game where any move you make won't give you an advantage if your opponent continues playing their best game.



Dominant and Dominated Strategies:

These are strategies that are always the best or worst, no matter what the other players do. If you have a 'dominant' strategy, that's the move you should always make. A 'dominated' strategy is one you should never make because there's always a better move.

Uses of game Theory:

Game theory isn't just about games. It's used in economics to understand how businesses compete, in politics to model negotiations between countries, and even in biology to understand animal behaviour. So, the next time you're playing a game or making a decision, remember - you're using game theory!

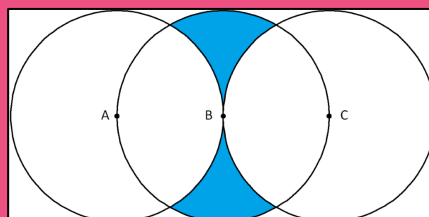
Q1: In a game of rock-paper-scissors, what is the Nash Equilibrium assuming that players choose their strategies randomly?

- (A) No Nash Equilibrium
- (B) Both players always choose rock
- (C) Both players always choose paper
- (D) Both players always choose scissors
- (E) Both players choose their strategy randomly

Q2: $X+6+12+24+48+\dots$

Given that the sum of the 1st 5 terms of the sequence above is 93, find the value of X.

Q3: Given that the radius of each circle is 4cm, find the total area of the shaded region in terms of π :



?

← Scan the QR code to answer the quiz.
(Prizes available!)



The Loneliness Epidemic

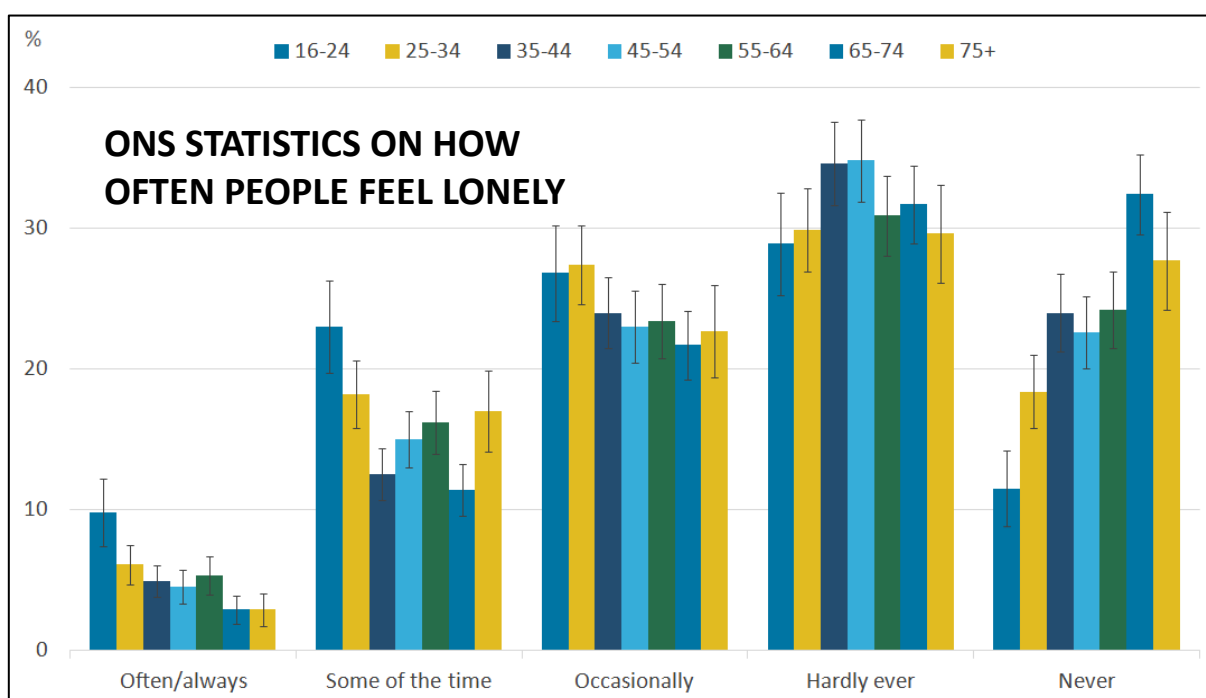
Feature - Abubakar

The UK is full of life and a plethora of people from many different backgrounds that make up the populace of cities and towns up and down the country, however there is a silent epidemic that has become interwoven into the very fabric of modern society, and it is called loneliness. The world we live in has become a world that is increasingly more and more connected due to things such as the internet and yet more and more individuals find themselves grappling with isolation and the profound knock-on effects it can bring. Loneliness has evolved as of late into a pressing public health concern, with far-reaching implications for mental and physical well-being and in my article on this I will take a deep dive into the causes, effects and everything else to do with loneliness.

The world has become increasingly connected by the internet and social media, however although the internet is a great and wondrous place it has been noted that the increasing use of the internet can lead to higher feelings of isolation because people may become addicted, or they may not feel able to foster and create relationships outside of the internet.

The COVID-19 pandemic further exacerbated this crisis, forcing individuals into social isolation and disrupting traditional support systems and meaning that everything moved online for a few years and people felt they could not communicate with others anymore. The Office for National Statistics (ONS) reveals that millions of people in the UK live alone, a number that has been steadily rising over the years. "There were 4.4 million women living alone (53% of the total) compared with 3.9 million men; however, the number of men living alone has grown by more than the number of women living alone over the last decade (0.4 million more men compared with 0.2 million more women)."

This is a quote directly from the ONS and as it can be seen there is a plethora of people that live alone and although a lot of people do enjoy living alone or can handle it a lot also do not like to be alone and are alone not through choice but because it is how life has turned out for them and for some this can make them feel isolated from society and people in general and can lead to further issues such as depression or even more severe issues such as suicidal thoughts.



The Country wide approach to combat loneliness can be seen through governmental investments into multiple different programs that work towards combatting loneliness. One such program is a governmental initiative that is titled “The Know Your Neighbourhood Fund” (GOV.UK Website). This fund was created with local communities in consideration and its purpose is to as the government says “empower local communities to increase volunteering and reduce chronic loneliness in 27 target disadvantaged areas in England” and it is said this will be done through opening museums, libraries, community clubs and more and this is something that is very important as interesting community spaces help to get people out of their shells and give lonely people a community of their very own with people that share their interests and hobbies.

An initiative to combat loneliness among University students is a platform called Student Space, which “£3.6m has been invested in.” The purpose of such a website is to take into concern mental health and wellbeing and to provide an online platform offering online mental health support to all students in England and Wales.



LDE also understands loneliness and its consequences and as such there have been emails sent out to all students to access a website called KOOTH, which is a website that offers wellbeing services to children aged 10-18 and although personally I have never used this, I can see the benefit and if anyone may be struggling, I would advise to use the service with it being free and all. However, if you do not feel comfortable with that then reach out to someone that is trusted as we all go through rough patches and if you are affected by anything spoken about then it is even more vital to reach out.

Now what is the purpose of this article? This article exists in order to shed light on a very important and troubling issue that plagues millions around the world but more precisely within the United Kingdom and it has been written to empathise with those that may be going through such situations and in order to show them that although they may be feeling lonely they are not in fact alone and there is things that can be done in order to combat such issues and this can be accomplished with a plethora of different and varied techniques.

These words ‘alone’ and ‘lonely’ are interchangeable used for the same thing, but this inaccurate. Being alone and being lonely are two very different situations. Being alone simply refers to not being in the presence of others or one simply being on your own and there is a considerable amount of people that do in fact enjoy being alone and by themselves and these people would not be considered lonely. I say this because some of the loneliest people in the world may be surrounded by droves of people, but are still unable to shake the psychological feeling of loneliness and this is why being alone and lonely are not the same and care should be taken to make sure they are not used interchangeably or incorrectly.



Hundreds of LEGOS scattered across the tables of LDE. This is more than just playtime.

During the winter term, LDE'S flagship Lego programme invited a primary school in Barking and Dagenham to host their students for a LEG primary session. Lead by the famous Global Teacher Award Finalist and Psychology Teacher Shafina, the aims of the session were to push tactile learning onto modern education by inspiring the next generation to think about living on Mars through LEGO.

"Kids inherently understand building blocks, but we're taking it a step further by engaging with their problem-solving skills and applying them into the real world, in this case it was getting them to think about living in Mars" - Rebecca, Primary Lab Manager of the programme.

During the workshop, students embarked on a journey to contrast life on our home planet against the challenging environment of Mars. The sessions provided a window into the possible necessity for humanity's relocation to the Red Planet and why scientists are thinking about Mars right now. After watching the perseverance rover in mars touch down, the primary school children were then asked to create a model on their very own settlement on Mars. To the team's surprise, the children did not disappoint! Lots of creative ideas were showcased, including a biowaste conversion system that proposed to convert biowaste to useable fuels!

"When I was in school, learning was about memorising what's on the whiteboard and onto the test papers, but I'm glad to see that we're actively changing this and are making links to the real-world problems, and hopefully these young kids will one day be out future STEM Engineers!" - Neon, Graphic Designer of the programme.





Our year 13 Design learners were invited to Overbury's Charlotte Street site for an informative breakfast and a masterclass on Design thinking and Design Theory. The session covered various job roles within the company and included a tour of the active construction site.

Each speaker not only shared a comprehensive overview of their respective roles but also delved into the specific skills crucial for success in their positions. They outlined daily responsibilities while emphasizing the importance of skills such as sketching, proficiency in CAD, and the art of delivering impactful presentations using PowerPoint. These insights directly correlated with the skills currently being developed by our learners, bridging the gap between their academic pursuits and real-world applications in the design industry.

They also explained what office fit-out is, breaking down the process of designing and fitting workspaces. The speakers highlighted how each role contributes to a successful office fit-out. The session covered different career paths, including apprenticeships and post-sixth form options in construction, commercial sectors, and design. It was a practical and informative session that helped learners see the connection between their studies and real-world jobs.

The highlight of the day was an illuminating tour of the construction site, providing learners with a first-hand look at the intricacies of an ongoing project. Learners had the opportunity to ask questions about the site and careers throughout and following the tour.

This trip offered learners the opportunity to peek behind the curtain of an active construction site, motivating them by illustrating the real-world impact of their educational journey.



Farewell



As we close this edition of our newsletter, we celebrate learners from our newly formed Media Society whose creativity and dedication has infused our pages with diverse perspectives on current affairs, employer engagement, and extracurricular activities.



Their voices have enriched this publication, making it a true reflection of our vibrant college community.

We extend our heartfelt gratitude to all contributors and wish our readers a joyful and hopeful 2024. Here's to the stories we share and the ones yet to unfold.

